



Bathing establishment Fact Sheet

Bathhouse name	PATRIA
Address	Lungomare 59
City	Marina di Pietrasanta (Lu)
Contacts	+39 0584 745320
Website	Not detected

TESTED BY: [Handy Superabile - Social Promotion Association](#) in summer 2023

Please note The following information refers to the verification date shown at the bottom of each card. **The Association** is not responsible for any significant changes made by the property after the visit.

Summary

Bathing establishment Fact Sheet	1
Arrival at the facility.....	2
Private/public parking.....	2
Pathway from the parking lot to the main entrance	2
Reception.....	3
Bar/restaurant	4
Internal Pathways and common services.....	5
Internal Pathways	5
Toilet and shower accessible to guests with reduced mobility	5
Changing room	6
Beach.....	7
Children's play area	8
Swimming pool	9
Doctors' Offices/Healthcare Facilities	10

Project carried out with the contribution of the





Arrival at the facility

Private/public parking

Presence of private parking	YES
Presence of parking space reserved for people with disabilities	NO
Type of parking surface	GRAVEL
Public parking nearby	YES
	

Pathway from the parking lot to the main entrance

Pathway from the car park to the entrance	Flat
There are markers and tactile maps	NO
Usable door/entrance width	more than 90 cm



Project promoted by



Regione Toscana



Reception

Umbrella booking system	<input type="checkbox"/> Via web <input checked="" type="checkbox"/> By phone <input checked="" type="checkbox"/> On-site
Presence of multilingual staff	YES
Presence of plant plan with key to services available	NO
Presence of visuo-tactile map	NO
Bulletin board/information panels at an average height of 130 cm in a well-lit area and font size at least 14 dpi with a contrast ratio greater than 4.5:1	NO
The staff attended training courses on welcoming people with different disabilities	NO

Project carried out with the contribution of the



**Presidenza del
Consiglio dei Ministri**
Ministro per la disabilità



Bar/restaurant

Type of venue	Snack bar
Access to the premises	via ramp length 331 cm, width 95 cm, gradient 7.5 %
Usable door/entrance width	more than 90 cm
Bar counter	height greater than 100 cm
Types of tables	with central support
Space underneath the tables from the floor	68 cm
Multilingual menu	YES
Menus with large print fonts	NO
Braille menu	NO
Table service for people with disabilities	YES
Availability of gluten-free food	<input type="checkbox"/> bread <input type="checkbox"/> pasta <input type="checkbox"/> biscuits <input type="checkbox"/> ice cream <input checked="" type="checkbox"/> Pre-packaged foods



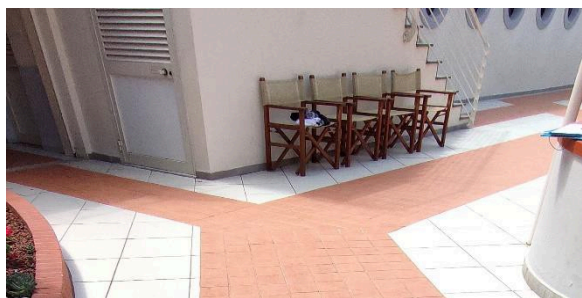


Internal Pathways and common services

Internal Pathways

Indicate whether the pathways connecting the entrance to the beach are flat or with ramps in addition to those already described

Flat paths

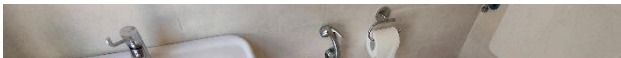


Toilet and shower accessible to guests with reduced mobility

Number of toilets accessible/usable by guests with reduced mobility	1
Access to the premises	Flat
Usable width of the entrance door	89 cm
Toilet height	58 cm
Open front toilet seat	YES
Support handles	to the left of the toilet





Flexible hand shower at the side of the toilet	YES
Free space on the sides of the toilet	left 85 cm right 27 cm frontal 35 cm
Electric doorbell/phone	NO
Washbasin with space underneath for wheelchair	62 cm
Height from the ground on the bottom edge of the mirror	missing
Baby changing table	YES
reduced mobility	

Changing room

Accessible changing room available for guests with reduced mobility	YES
Access to the premises	Flat
Usable door/entrance width	86 cm
Size of the dressing room	sufficient for wheelchair manoeuvring
Presence of a cot	NO
Coat rack height from the ground	Missing coat rack



Project promoted by



Regione Toscana



Beach

Type of beach	sand
Access to the beach	Flat
Walkway to reach the umbrellas	YES
Type of walkway	concrete
Walkway width	90 cm



Project carried out with the contribution of the



**Presidenza del
Consiglio dei Ministri**
Ministro per la disabilità



<p>Removable Platform between the walkway and the umbrella station to facilitate the passage and parking wheelchair</p>	<p>YES</p>
<p>Amphibious beach chair available for helping people with reduced mobility to enjoy swimming (owned by the establishment or by association)</p>	<p>YES</p>

Children's play area

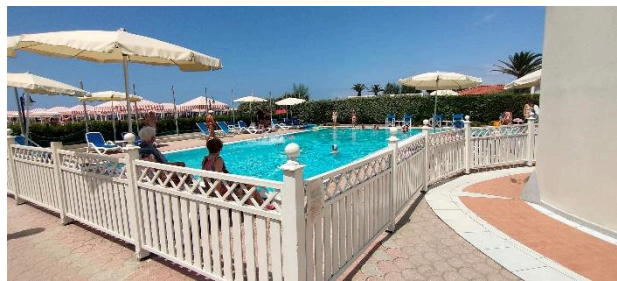
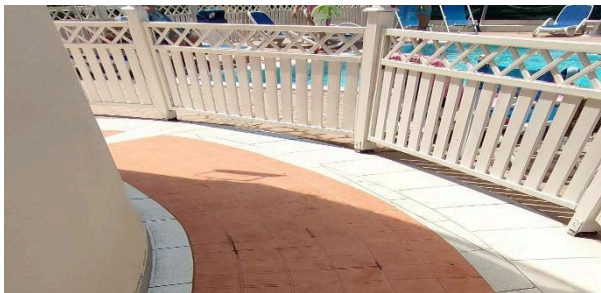
<p>Children's play area</p>	<p>inaccessible to children with reduced mobility due to the presence of steps</p>
<p>There are games for children with reduced mobility</p>	<p>NO</p>





Swimming pool

The property has a swimming pool	YES
Access to the swimming pool	Flat
Useful width of the entrance gate	more than 90 cm
Access to the pool	with smooth sloping ramp
Bathing aids for guests with reduced mobility	Not present





Doctors' Offices/Healthcare Facilities

Hospitals near the facility	Ospedale Versilia SS1 Via Aurelia n. 335 55049 Lido di Camaiore LU Tel. 0584/6051
Other Healthcare Facilities	Distretto Sanitario ASL 12 Pietrasanta Via Martiri S. Anna 11 Tel. 05846058823 Croce Verde Via Risorgimento, 1 Forte dei Marmi Tel. 058484013 free dialysis and first aid service for white codes Emergency medical service Via Martiri S. Anna Tel. 0584 616774 Misericordia Via Mazzini Pietrasanta Tel. 058470055 Medical service "San Camillo" Nursing Home Via P.I. da Carrara, 37 Tel. 0584 7391 Dialysis service c/o Croce Verde Viale Italico at the corner of Via Risorgimento Forte dei Marmi Tel. 058484013 affiliated with AUSL

TESTED BY: [Handy Superabile Social Promotion Association](#) in summer 2023

